

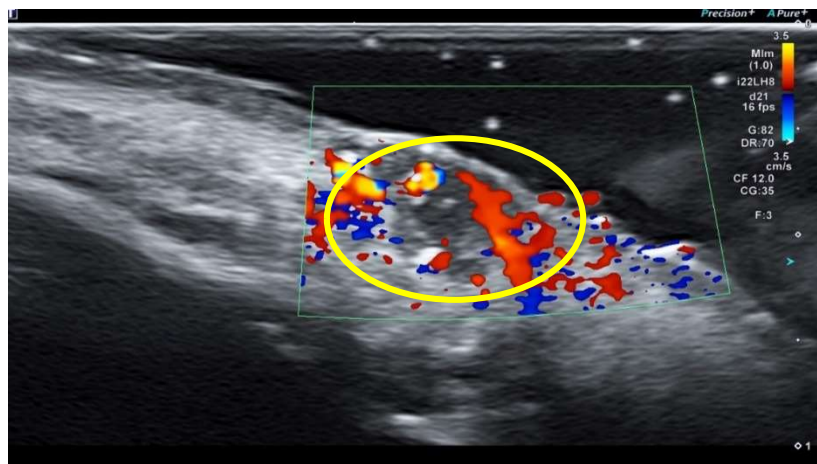


SONOGRAPHY IN PATHOLOGIES OF SCALP AND HAIR

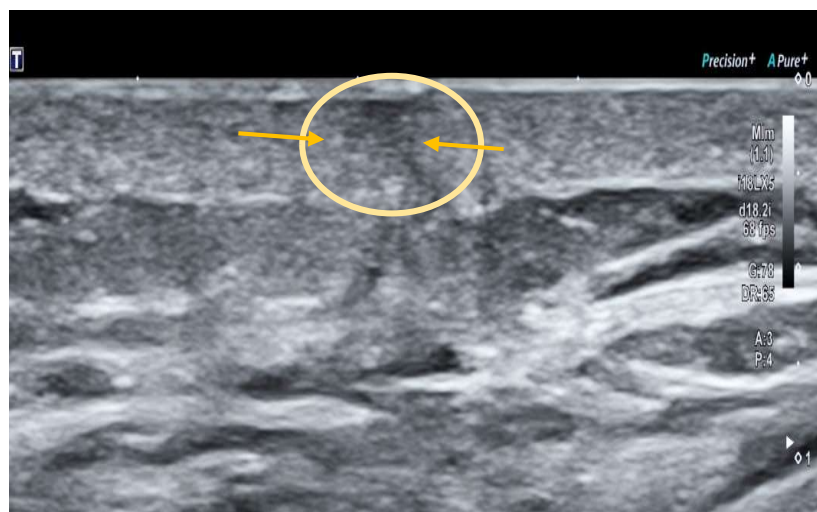
Diagnostic protocols in the hair loss & regeneration industry includes the use of microscopy and subdermal scanning. This includes the blood flow functions in 3D ultrasound, offering real-time quantitative reporting of hair follicle health and conditions. Health issues of the scalp indicate a wide range of possible disorders including Dandruff, Seborrheic Dermatitis, Fungal Infections or inflammatory conditions like Psoriasis. They may likely result in cosmetic interference and quality of life issues that may call for the need for medical surveillance or clinical intervention.

Upon review of the latest advancements in ultrasound technology, scalp pathology and cross-sectional imaging presented physicians with a new areas of pathological reporting, yielding to

a more targeted way of prescribing solutions to mitigate scalp-related issues including HAIR LOSS.



(L-Image) Inflamed Hair Follicle note feeding arteries -red-/ high flow turbulence from tortuous vessels-yellow



(L-Image) Scarred hair follicle-orange outlined area shows scar formation from inflammatory fibrosis

FOR MORE INFO ABOUT OUR IMAGING PARTERSHIP PROGRAM, VISIT:

www.BARDDIAGNOSTICS.com or call OUR NYC CENTRAL OFFICE @: 516-522-0777